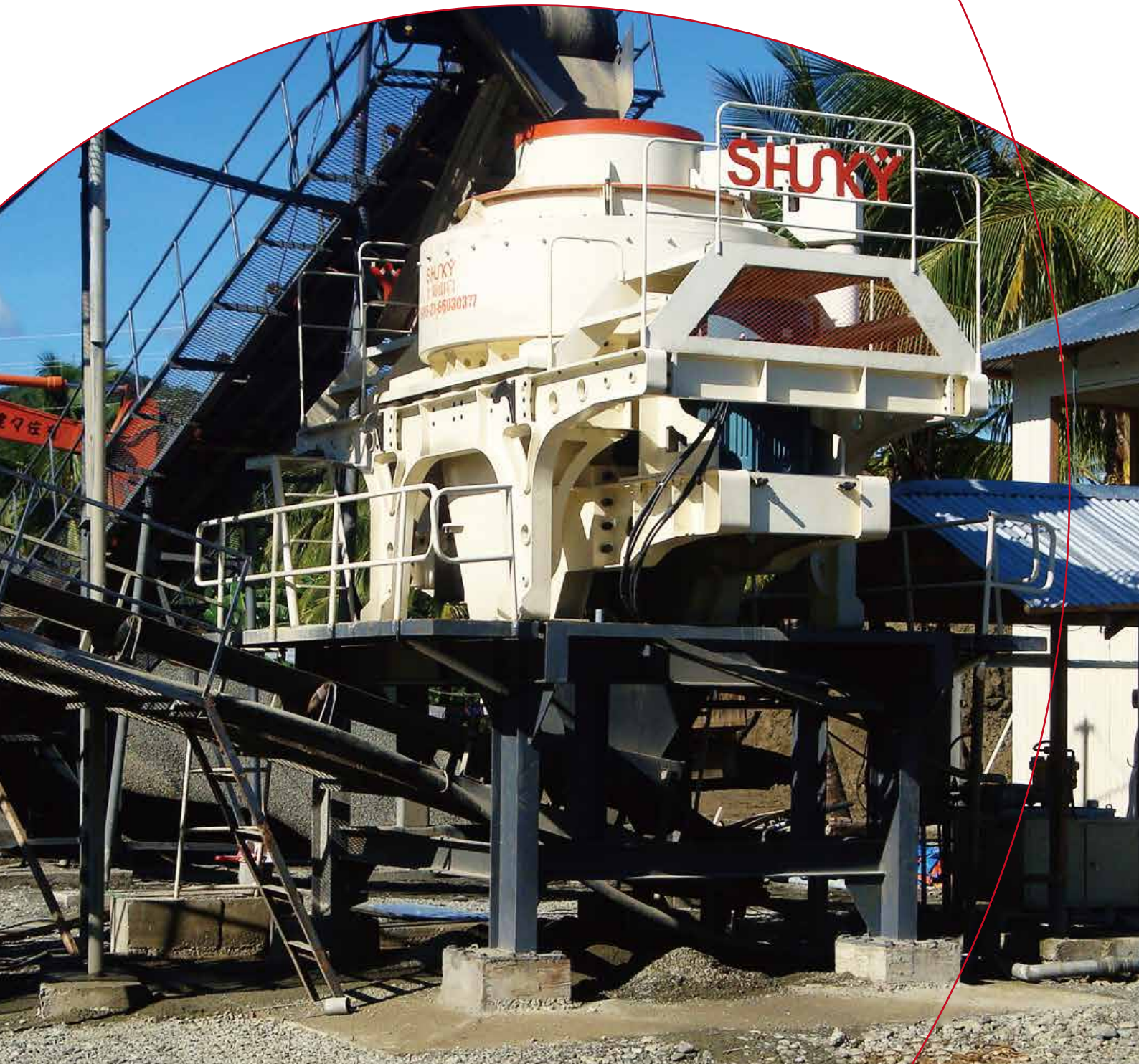


SHUKY

VSI 系列立轴冲击式破碎机

VSI Series Vertical Shaft Impact Crusher



01 产品简介

Brief Introduction



VSI系列立轴冲击式破碎机是我公司最新研制成功的具有国际先进水平的新型制砂整形设备。多年的技术积淀，现代化加工设备的精工制作保证了VSI系列立轴冲击式破碎机在同行业的领先地位。优异的性价比、可靠性在同类产品中独树一帜。VSI系列立轴冲击式破碎机是结合中国的工况条件，引进德国权威专家最新研制成果，经过改进设计的新型制砂整形设备，也是目前国内独家生产的具有世界先进水平的第五代高性能制砂整形设备。

VSI series vertical shaft impact crusher is the latest successful sand making machine with the international advanced technology. Many years' technology accumulation and modern processing equipment ensure the leading position of the VSI vertical shaft impact crusher in this industry. Excellent cost performance and reliability make VSI vertical shaft impact crusher outstanding in the similar products. VSI vertical shaft impact crusher is the perfect combination of the latest research result of Germany and Chinese present working conditions. It is currently the fifth generation of exclusive production sand making machine with the world's advanced level.

02 技术参数

Technical Parameters

型号 Model		VSI-7611	VSI-8518	VSI-9526	VSI-1140	VSI-1145
处理能力 Capacity(t/h)	瀑落与中心进料 Center and ring feeding	120-180	200-260	300-380	450-520	500-640
	全中心进料 Center feeding	60-90	100-130	150-190	225-260	250-360
最大入料边长 Max.feeding size (mm)	软料 Soft material	<30	<35	<40	<40	<40
	硬料 Hard material	<25	<30	<35	<35	<35
转速 Rotation speed (r/min)		1700-1890	1520-1690	1360-1510	1180-1310	1100-1310
双电动机功率 Power for double motor (kw)		55kw×2	90kw×2	132kw×2	200kw×2	220kw×2
最大外形尺寸(mm)		4200×2300×2500	4200×2300×2700	4700×2550×2950	5800×2750×3350	5900×2800×3350
电源 Power source		380V; 50Hz				
振动传感器监测范围 Vibrating sensor		0.1-20mm/s连续可调 Inspect scope: 0.1-20mm/s adjusted continuously				
液压润滑站 Hydraulic Lubrication Station	油泵电动机功率 Power for oil pump (kw)	2×0.31				
	安全保护 Safety	双油泵互补保证供油; 无油流、无液压自动停机; 水冷降温; 冬季电机加热启动 To make sure the supply of the oil with double oil pump; Stop working without oil or hydraulic pressure; Temperature falls when the water cools; Start the motor by heating it in winter.				
	外形尺寸 Dimension (mm)	820×520×1270				
	油箱加热器功率 Power for oil box heater (kw)	2				



03 性能特点

Features

1. 处理量大、产量高

与同等功率下的传统设备相比，产量提高30%；

1. Large capacity and high output

Compared with the traditional equipment with the same motor power, it increases 30% output;

2. 易损件消耗低

最佳的破碎腔物料撞击角度设计，极大降低了耐磨件的损耗，比传统设备运行费用低30%；

2. Low consumption of wearing parts

Excellent designed impact angle in crushing chamber reduces abrasion of wearing parts, consequently reduces 30% operating cost;

3. 成品粒形优异

成品呈立方体，粒形好、级配合理、细度模数可调；在人工制砂和石料整形方面具有独特优势；

3. Fine shape of final products

Cubical product, good shape, reasonable gradation, adjustable fineness modulus; it has unique advantage in artificial sand making and stone reshaping;

4. 液压装置、易于维护

液压起盖装置，使破碎腔内部件检修拆换方便快捷，缩短停机时间，降低维护成本；

4. Hydraulic drive system, convenient to maintain

Hydraulic cover opening device is more convenient and easier to replace the wearing parts in crushing cavity, decrease the downtime and reduce maintenance cost;

5. 自动检测、安全可靠

自带振动检测与报警装置，如果设备运转异常，自动发出警告，设备停止工作，达到保护机器的目的；

5. Safe and reliable for automatic monitoring equipment

Vibration detection and alarm device. If machine goes wrong, it will warn and stop the machine to protect the machine;



6. 稀油润滑、自动保养

国际先进的稀油润滑站，双油泵互补供油，自动检测油量油压，不符合设定标准值自动停机；油液冷却及加热装置确保轴承润滑始终处于最佳状态，从而彻底解决轴承散热问题，使主轴轴承保持恒温，延长维护周期和使用寿命；

6. Thin oil lubrication and automatic Amaintenance

The international advanced oil lubrication station supplies oil with double oil pump and detects the oil mass and oil pressure automatically. Heating and cooling oil device ensures the bearing's lubrication is at its best, which has the bearing over-heat protective function, makes the main bearing keep a constant temperature and has long performance life.

7. 安装简便、易于操作

结构紧凑、安装方式多样，安装、维护和保养简单，操作使用方便；

7. Simple installation and easy operation

Compact structure and diverse installation. It is very easy for installation, maintenance and operation.

8. 一机多用、应用广泛

独特可变的进料方式可满足不同用户对人工制砂、碎石整形、特殊物料细碎等多样需求；

8. One machine for multi-purpose, flexible application

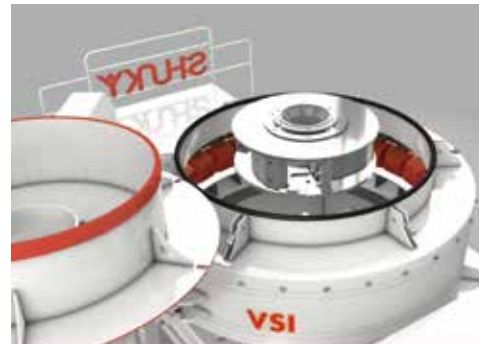
The unique variable feeding method can meet the different needs of every client, such as making artificial sand, reshaping the gravel and crushing other special materials;

9. 国际品质保证

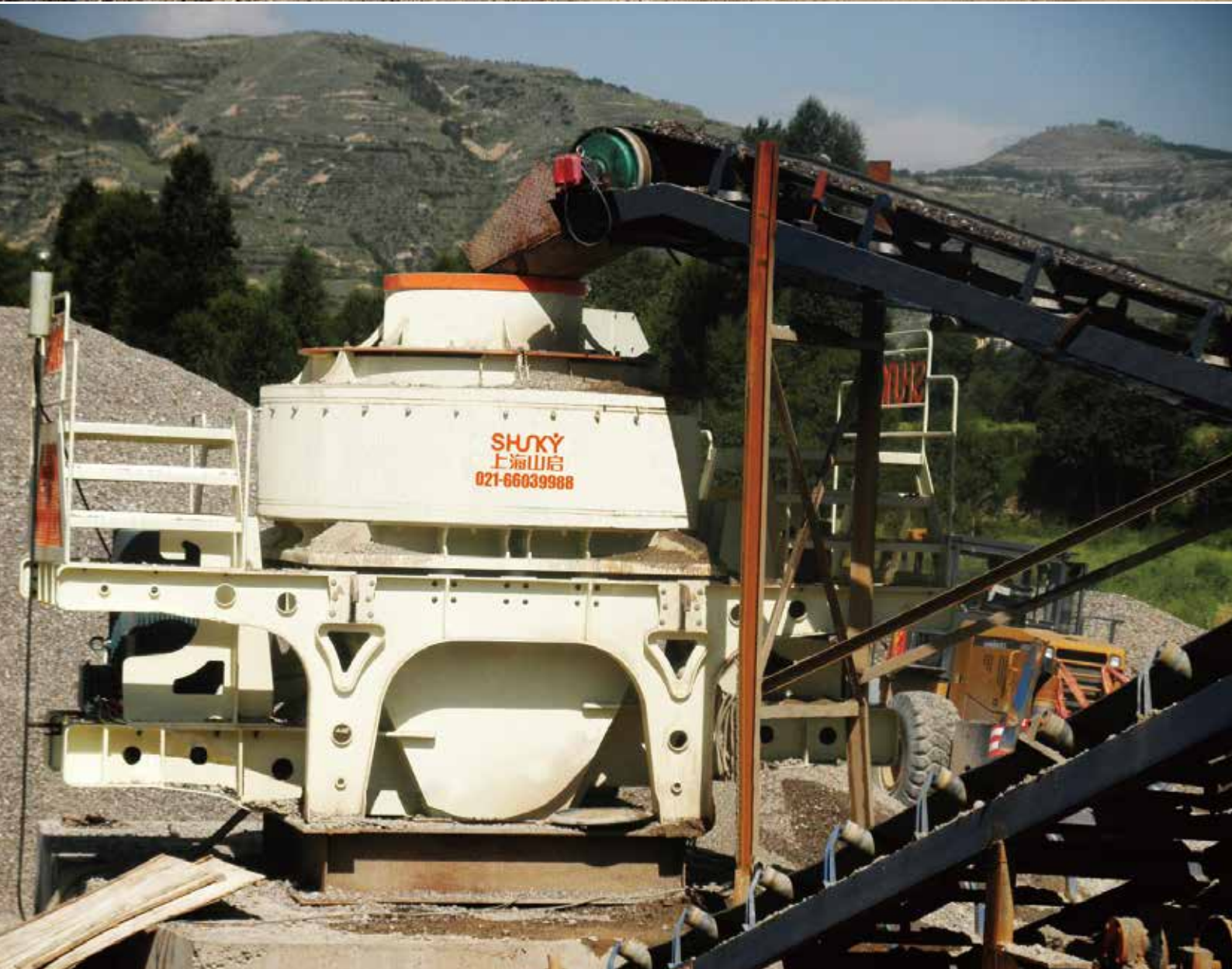
德国最新技术工艺，先进的铆接技术应用以及汽车工艺的外观喷砂除锈处理和喷漆工艺应用，极大的提高了设备的内在质量和外观品质；

9. International quality assurance

German latest technology: advanced riveting technology and abrasive blasting, rust removal and spray paint used in automobile technology greatly improve inner and exterior quality.







地址：上海市浦东新区金海路1000号

电话：021-66039988

传真：021-66030508

邮编：201206

网址：www.shunky.com www.shunky.cn

Email：Service@shunky.com



Address: No.1000 Jinhai Road, Pudong District, Shanghai, China

Tel: 0086-21-66030377

Fax: 0086-21-66030508

Zip: 201206

Web: www.sk-crusher.com

Email: marketing@shunky.com

Skype: shunkychina

Facebook: ec@shunky.com

注：本手册内容如有变更恕不另行通知。

